

**WOTWATA NEIGHBOURHOOD PLANNING GROUP  
MEETING NOTES: TUESDAY 22 NOV 2016, WALTHAM VILLAGE HALL**

**Attendees**

Derek Doran (DD) – YourLocale  
Cllr Martin Lusty (ML)  
Glena Rowlands (GR)

David Lovegrove (DL)  
Cllr Peter O'Connor (POC)  
Steve Ware (SW)

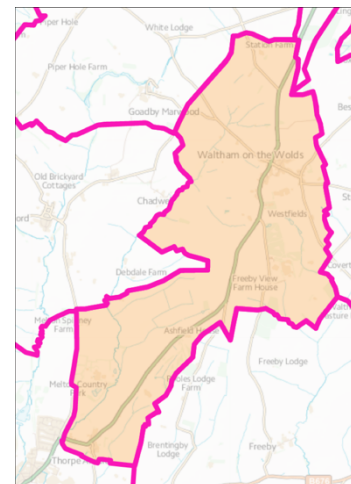
**Apologies**

Claudine Baxter (CB)  
Cllr Malcolm Mills (MM)

David Jefferson (DJ)

**Copies to:**

NP Group members, Gary Kirk, John Martin and James Beverley, MBC



**1. Meeting aims**

- Update everyone on progress so far.
- Review the input from the November consultation sessions.
- Think about gaps not addressed.
- Plan required actions to get the Plan drafted.

**2. Update on progress**

The meeting was originally planned as a meeting of the Housing Theme Group then expands to include all members of the NP Group. In the event, SW was the only person to attend other than members of the Housing Group so the update on progress was not undertaken.

**3. Reviewing the consultation comments**

We looked at parishioners' comments from the consultation sessions held on 16 & 17 November, concentrating on those relating to development site allocations and housing numbers and design. It was agreed that the feedback was generally supportive of our proposals and formed an excellent basis for drafting policies and writing the draft NP. The summary document from Gary Kirk was awaited – ML to contact Gary regarding the timing. Also it is unclear as to who will draft the policies relating to housing. Gary is also preparing a gap analysis to identify areas we haven't yet covered. **Action: ML to contact Gary Kirk and circulate information when available.** Note that, subsequent to the meeting, Gary Kirk has confirmed that the summary document will be available early w/c 28 November and that he will be producing draft Policies very early in January. For your information, Gary is away from 2-14 December. Meanwhile, policy headings and example policies from other NPs to be circulated – **Action: DD.**

**4. Limits to Development**

The concept of Limits to Development was well received at the consultation sessions. Draft Limits for Thorpe Arnold to be proposed – **Action: DL.** Limits for Waltham to be finalised – **Action: ML.** John Martin will then produce the final maps.

**5. Building Design**

The response to the section on housing design was generally well received. GR undertook to review and finalise this section. **Action: GR**

**6. Response to the Local Plan consultation**

The priority is to respond the current consultation on the pre-submission Local Plan by 16 December. POC volunteered to develop a first draft and DD offered to review and maybe add to this. **Action: POC and DD.**

**7. Group membership**

It was noted that a number of group members were absent so their on-going interest to be checked. **Action: ML.** Phil and Val White have offered to help – **Action: SW to approach them to clarify in what capacity.**

**Next meeting:** to be arranged. **Action: ML**