

WALTHAM ON THE WOLDS AND THORPE ARNOLD NEIGHBOURHOOD PLAN GROUP

MEETING NOTES: MONDAY 11 JULY 2016 WALTHAM VILLAGE HALL

Attendees

Claudine Baxter (CB)
Rachel Quine (RQ) – Minutes
Steve Ware (SW) – Chair
Glena Rowlands (GR)
Gary Kirk (GK)
Derek Doran (DD)

Apologies

Cllr Martin Lusty (ML) - Secretary
Cllr David Lovegrove (DL)
James Houghton (JH)
David Jefferson (DJ)
Cllr Malcolm Mills (MM)

Copies to:

NP Group members (RQ to action)
'Your Locale' Consultants Gary Kirk, Derek Doran, John Martin (RQ to action)
PC website, James Beverley, MBC (MM to action)

• Notes from last meeting

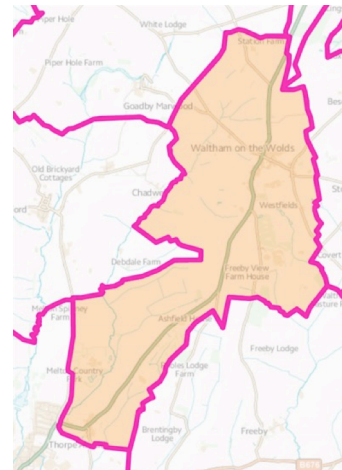
No requested changes.

• Review of Visioning Document and suggested programme from YourLocale

GK introduced Derek Doran (DD) to the group whose expertise is in planning, housing and the built environment. He also spoke about John Martin (JM) who will work with the group in relation to environmental matters.

GK talked through the Visioning Document and highlighted key areas including:

- Identified need for Thorpe Arnold to provide a proportion of new housing as a rural supporter settlement. Estimate 34 houses.
- Options for development include over-providing to ensure that plan can address housing need over 20 year period or having a cut-off target number of houses / sites and build in provision for reserve sites.
- Priorities for our neighbourhood from consultation included sympathetic housing design, off-road parking to ease traffic congestion (especially on High Street), protecting panoramic vistas and views approaching village, identifying and retaining important green space and heritage assets. Employment is not a major issue for our 2 villages so group agreed that Your Locale do not need to provide a specialist associate to advise on this
- Need for school investment and redevelopment discussed.
- Tourism – need to keep villages pleasant so people want to visit.
- Traffic – speeding traffic through village is an issue. GK confirmed that Data from Community Speedwatch would be useful. **Action 1:** CB to liaise with Simon Yates to obtain community speedwatch data. GK can suggest some potential solutions for traffic issues to ensure that situation not made any worse by housing development. GR raised issue of adopted and unadopted roads.
- Network of Waltham wells discussed. This is a feature unique to this village which could possibly be protected. **Action 2:** SW to contact Richard Snodin (RS) to try and obtain copy of well survey previously undertaken.
- DD explained the 26 point Site Sustainability Framework adopted by Melton and Harborough. YourLocale will use this to assess sites for our Neighbourhood, building on the useful site survey work already undertaken by the Group.
- GK stressed the need for a strong and robust Neighbourhood Plan which stands up to scrutiny by MBC and developers. Reasons for policies need to be well-reasoned and evidence-based.



- Housing mix – social housing no longer needed. Group agreed that starter homes and bungalows for down-sizing should be included in the mix, as highlighted in public consultation.
- GK referred the Group to the village design statement prepared for Wymondham within their draft plan which may be of interest to our Group. DD can assist with developing design guides.
- GK confirmed that it would be of benefit for DD to meet with MM and DJ for a discussion on areas to protect (green spaces, heritage assets, important views) and have a walk round the village to view and assess these. SW suggested that RS or Waltham History Group may be able to advise on heritage aspects.
- GK confirmed the need for 2 working groups with reps from YourLocale, Thorpe Arnold and Waltham on each.
- Housing and Built Environment Group will be guided by DD with suggested members as follows (subject to their agreement, plus any other volunteers) – GR, DH, JH, MM.
- Environment Group will be guided by JM with suggested members as follows (subject to their agreement, plus any other volunteers) – DJ, ML, SW, MM. SW explained that DJ may wish to step back after initial discussions with YourLocale, as he has already committed a large number of working hours to the project. GK suggested that this group meet prior to JM holiday commencing 18th July. **Action 3:** GK to email JM to get this underway.
- GK and SW agreed that work already undertaken is good quality and useful and further work will plug gaps. GK positive in assessment that Plan already beginning to take shape.
- Programme timetable published by YourLocale with incorrect year dates. **Action 4:** Revised version to be issued (GK).

- **Updates on progress**

- Site assessment – work to date discussed. Further work to be undertaken by Housing and Built Environment Group.
- Schools / young people – School feedback now completed. **Action 5:** RQ to forward to GK.
- Scouts, etc. – **Action 6:** MM to write up and share.
- Housing Design – GR, JH and DH to attend course this week.

- **AOB**

- **Holiday dates**

John Martin – Away July 18th to August 8th

Gary Kirk – Away July 28th to August 6th

Derek Doran – Away August 13th to 31st.

- **Summary of actions**

- 1) CB to liaise with Simon Yates to obtain community speedwatch data.
- 2) SW to contact Richard Snodin (RS) to try and obtain copy of well survey previously undertaken (and possibly heritage asset info).
- 3) GK to email JM to get first Environment Group meeting underway.
- 4) GK to issue revised version of programme timetable.
- 5) RQ to forward school consultation feedback to GK.
- 6) MM to write up and share young people consultation notes (scouts, etc.)

- Next meeting – to be confirmed.